

---

GHS

—  
Geometric Hairline Serif

---

Specimen Document

Ghs

---

©HouseOfBurvo  
2010



House Of  
Burvo

---

## About the font

GHS is an original font from HouseOfBurvo, designed and made by Matthew Burvill.

GHS stands for Geometric Hairline Serif, it is a serif typeface that is geometric in structure, it has strong vertical stress and its stroke is hairline thin. This gives it a fashionable, stylish appearance for headlines and display.

The font has been designed to work primarily as any other font, but it also has special features that can add an extra dimension to your design. This feature is Layering. Layering first appeared in HouseOfBurvos' fonts when Beauty was released, Beauty worked by layering three fonts to create the final letter forms and this idea has now been applied to a more traditional serif typeface.

When using GHS you set your type with the 'Key' font, and then when you're happy

with your layout, you can change the font to a layer containing only the Hairlines, and then copy and paste your text on top and change this second layer to a font containing only the Stress parts. You can then exercise more control over the appearance of your text than with any other typeface of its kind; for instance, you can offset your layers for varying degrees of distress, or use separate colours for each layer. You could treat one layer with a spot varnish so the text only becomes legible when reflecting light, or foil block the stress over the hairlines. You could even use the layers independently on an acetate sheet so the text is only readable with a 'decoding' sheet.

This font has many possibilities, and this document intends to show some of these and how to create them.

Light



---

GHS comes in two weights each with accompanying obliques.

Here you see Contextual Swashes OpenType feature switched on.

Light Oblique



---

NB: When viewing this font on-screen, subtleties in the Hairline widths may appear greatly exaggerated due to the resolution of monitors.

Please zoom in to see that all lines are of similar weight.

Heavy



Heavy Oblique



- 
- Features Latin Extended A Encoding Including these characters amongst others

ĂăĐđĶķĶĶŅņŅņ  
ŌōŒœÓóPpβ  
Àà

- 
- Contextual Swash

S w a s h

- 
- Ornaments

ELEGANCE

- 
- Ligatures

ff fi fl ffi fll st sp

---

Font Set 1

- Light A Key
- Light B Stress
- Light C Hairlines

Light  
Light  
Light

---

Font Set 2

- Light Oblique A Key
- Light Oblique B Stress
- Light Oblique C Hairlines

*Light Oblique*  
*Light Oblique*  
*Light Oblique*

---

Font Set 3

- Heavy A Key
- Heavy B Stress
- Heavy C Hairlines

Heavy  
Heavy  
Heavy

---

Font Set 3

- Heavy Oblique A Key
- Heavy Oblique B Stress
- Heavy Oblique C Hairlines

***Heavy Oblique***  
***Heavy Oblique***  
***Heavy Oblique***

Nymphs

Blitz

Quick

Vex

Dwarf

Jog.

Brick quiz

whangs

jumpy

weldt fox

*Jack fox*

*bids ivy-*

*strewn*

*phlegm*

*quiz!*

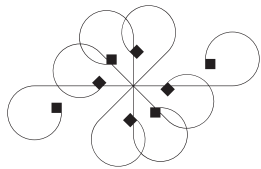
**F E W**

QUIPS

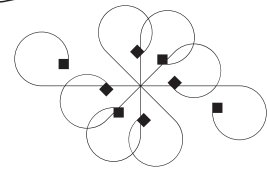
**GALVANIZED**

—THE—

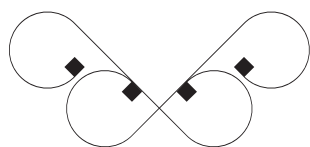
**M O O C K**



JURY



**B O X**



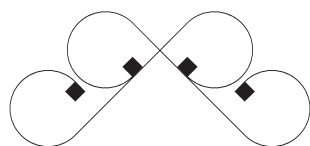
TWO

DRIVEN

JOCKS HELP

FAX MY BIG

QUIZ



Jack, love

my big

wad of

sphinx

quartz.

More  
Than  
20  
Good  
Reasons  
to use  
GHS

8 6 2  
G L Y P H S  
P E R  
F O N T !  
&  
P E R  
L A Y E R

Light

! " # \$ % & ' ( ) \* + , - . / 0 1 2 3 4 5 6 7 8 9 : ; < = > ? @ A B  
C D E F G H I J K L M N O P Q R S T U V W  
X Y Z [ \ ] ^ ` a b c d e f g h i j k l m n  
o p q r s t u v w x y z  
{ } ~ ¡ ¢ £ ¥ ¦ § ¨ © « ® ¯ ° ± » ¿

---

Heavy

! " # \$ % & ' ( ) \* + , - . / 0 1 2 3 4 5 6 7 8 9 : ; < = > ? @  
A B C D E F G H I J K L M N O P Q R S  
T U V W X Y Z [ \ ] ^ ` a b c d e f g h i j k l m  
n o p q r s t u v w x y z  
{ } ~ ¡ ¢ £ ¥ ¦ § ¨ © « ® ¯ ° ± » ¿

---

Light Oblique

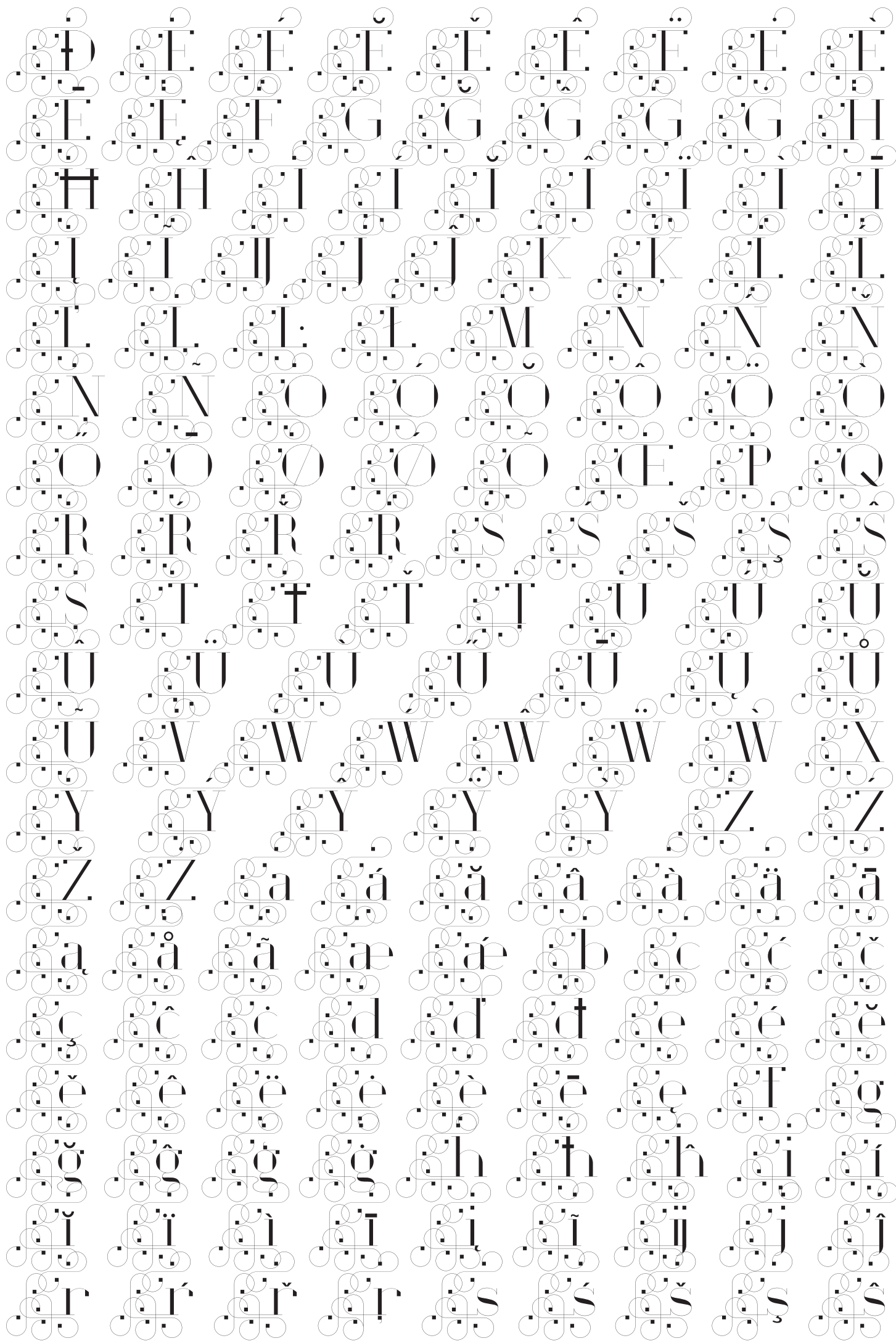
! " # \$ % & ' ( ) \* + , - . / 0 1 2 3 4 5 6 7 8 9 : ; < = > ? @  
A B C D E F G H I J K L M N O P Q R S T U  
V W X Y Z [ \ ] ^ ` a b c d e f g h i j k l m n  
o p q r s t u v w x y z  
{ | } ~ ¡ ¢ £ ¥ ¦ § ¨ © « ® ¯ ° ± » ¿

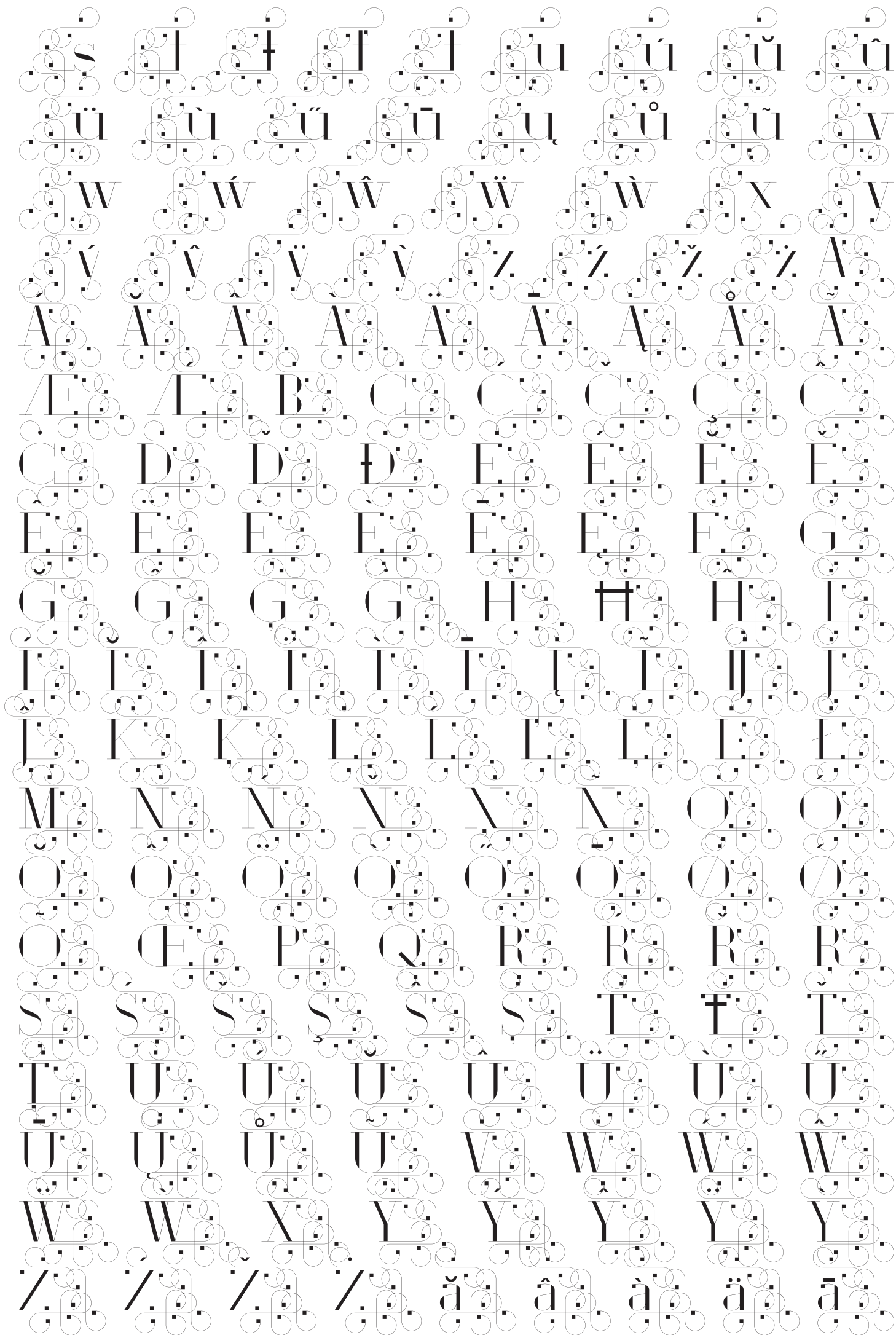
---

Heavy Oblique

! " # \$ % & ' ( ) \* + , - . / 0 1 2 3 4 5 6 7 8 9 : ; < = > ? @  
A B C D E F G H I J K L M N O P Q R S  
T U V W X Y Z [ \ ] ^ ` a b c d e f g h i j k l m  
n o p q r s t u v w x y z  
{ | } ~ ¡ ¢ £ ¥ ¦ § ¨ © « ® ¯ ° ± » ¿









---

## How to use

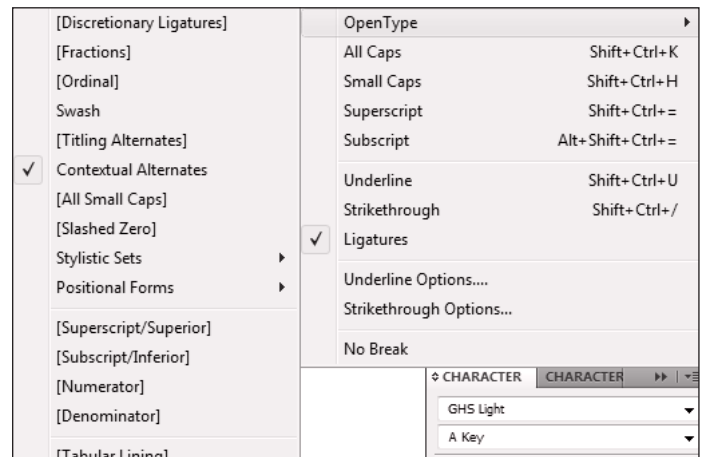
First and foremost, this typeface is intended to be used like any other you own. This is where Layer A — the Key font — comes in. This is the font you use to set your text before making any use of the layering option; In this section I shall show the most efficient ways of accessing all the fonts' features.

---

## Contextual Swash

To turn contextual swashes on or off, click on the 'Contextual Alternatives' option.

Please note that in some layout programs this feature is on by default.

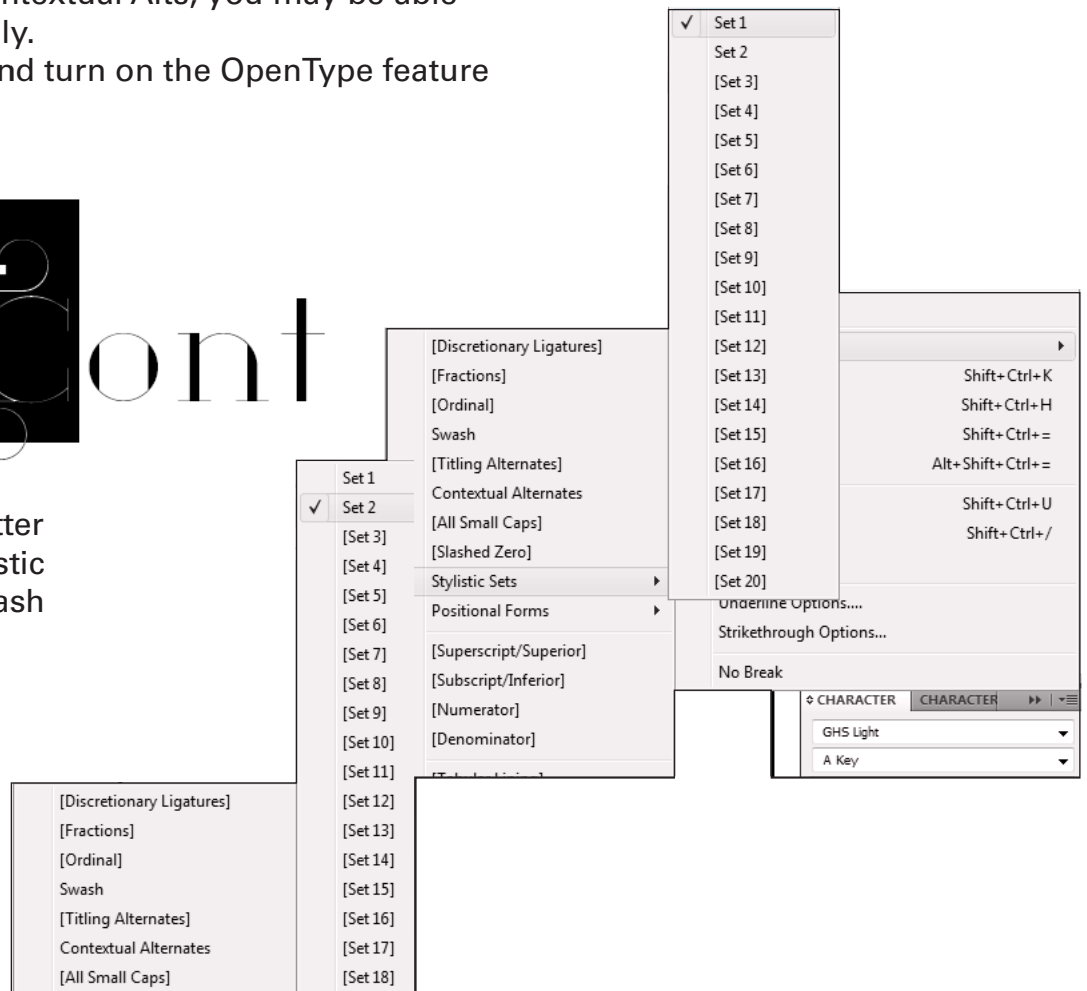


If you cannot access Contextual Alts, you may be able to add swashes manually.

Select your first letter and turn on the OpenType feature Stylistic Set 1.

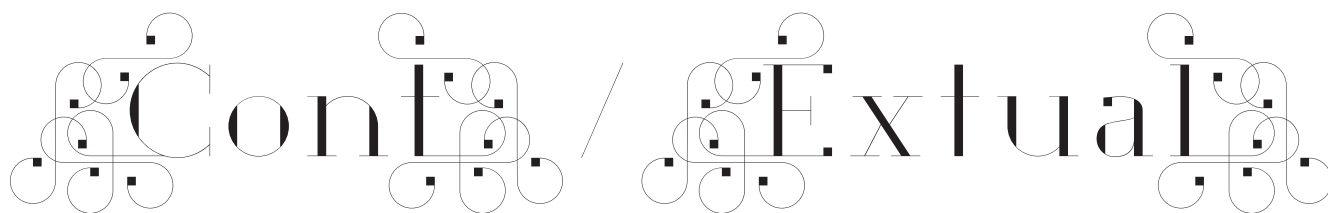


Then select your last letter and turn on either Stylistic Set 2 or the regular Swash feature.



---

## Example 1



The Contextual Swash feature is designed to automatically put swashes at the beginning and end of whole words. If you want to put a punctuation mark or other symbol

within your word, Contextual Swashes will be broken up like example 1. The best way to achieve this is to select all your text and turn off C-Alts, and then as explained previ-

ously, use the Stylistic Sets to manually add swashes to your text. See example 2.

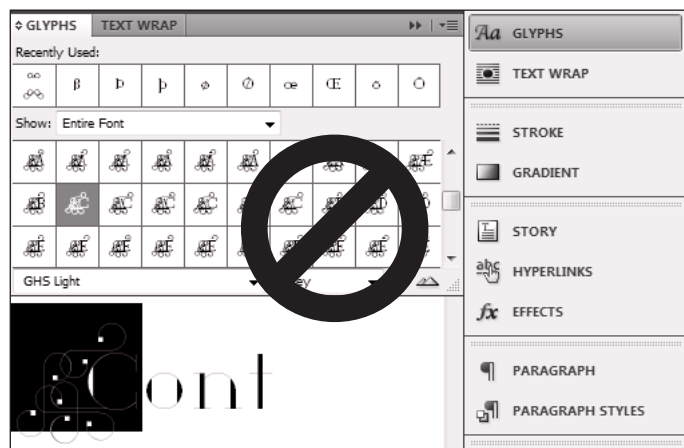
---

## Example 2



---

**NB:** Please be aware that when intending to use the layering option of this font, NEVER add swashes by using the glyph palette, because when you switch fonts from Layer A to Layer B or C, these will not change properly. It is therefore important you use the OpenType features outlined in this section to get maximum flexibility from your layout.



---

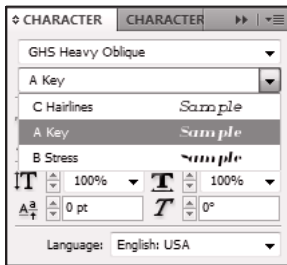
## How to use

One major feature of GHS is that each font set contains the Key font and two other versions separating the Stress parts and the Hairline strokes. These versions can be layered and offset for effect or treated with different colours or processes. This section will outline how to achieve these effects.

---

## Layering

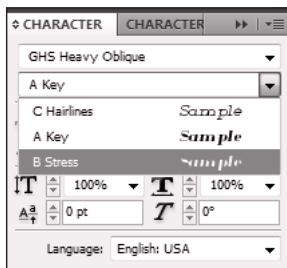
First of all, set your text in the Key font.



The word "Layering" is displayed in a decorative, layered font style. The letters are rendered in a bold, italicized serif font, with the 'L' and 'g' featuring elaborate flourishes. The text is set in a dark color, likely black or dark grey.

---

Then change the font to B Stress.



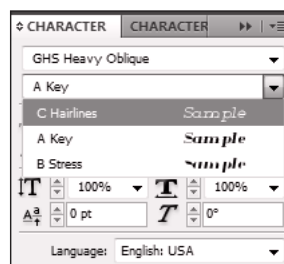
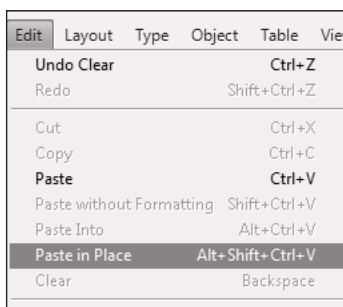
The word "Layering" is displayed in a decorative, layered font style. The letters are rendered in a bold, italicized serif font, with the 'L' and 'g' featuring elaborate flourishes. The text is set in a dark color, likely black or dark grey, and is surrounded by thin, light-colored hairline strokes.

---

Copy your text frame and use Paste in Place so that there is another identical text frame on top of your original. Change the font to C Hairlines and you have the finished text. You can then offset them for effect or as seen here, adjust the colours.

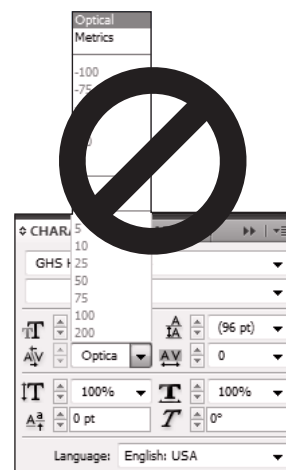


The word "Layering" is displayed in a decorative, layered font style. The letters are rendered in a bold, italicized serif font, with the 'L' and 'g' featuring elaborate flourishes. The text is set in a dark color, likely black or dark grey, and is surrounded by thin, light-colored hairline strokes. The text is offset from the original, creating a layered effect.



---

NB: NEVER set your text using the 'Optical' kerning feature, otherwise the layers will not line up as expected. The typeface has been kerned and should be left on Metrics or Auto, but if you do need to do manual kerning, it is OK to do this the traditional way, adjusting each pair individually. The layers will line up perfectly if you do so.



---

Example 1

Never do  
LAYERING  
USING  
OPTICAL  
KERNING

---

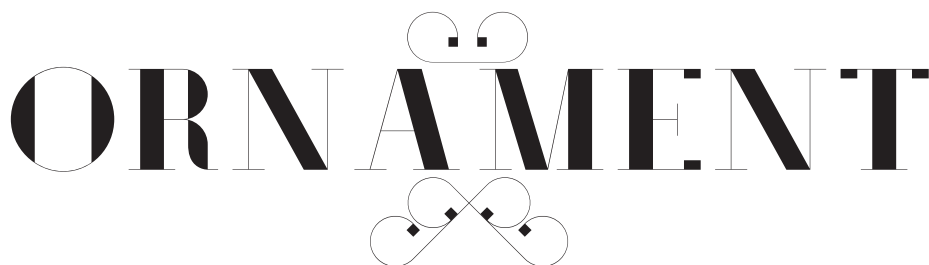
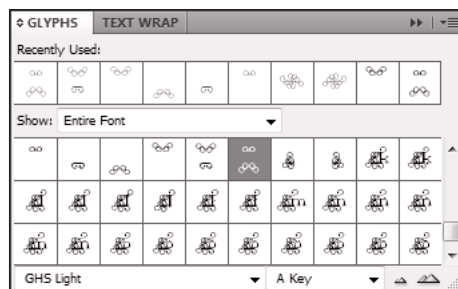
## How to use

Included in the font are various Ornaments you can use to enhance your layout. This sections will show how to access them.

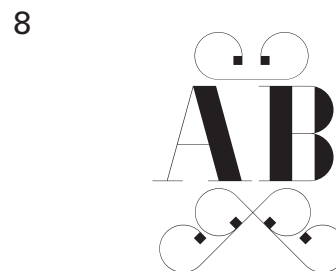
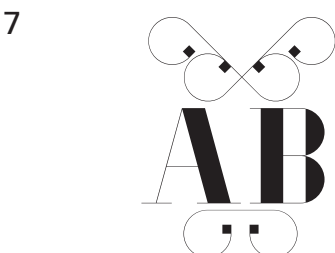
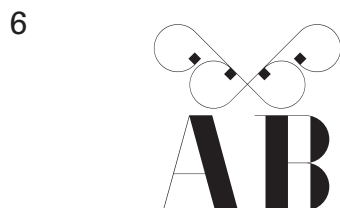
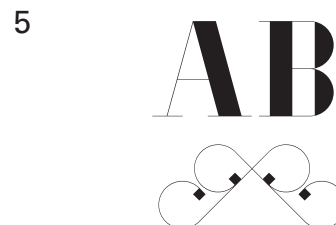
---

## Ornaments

Here you can see ornament 8 in use, accessed via Glyph Palette below.

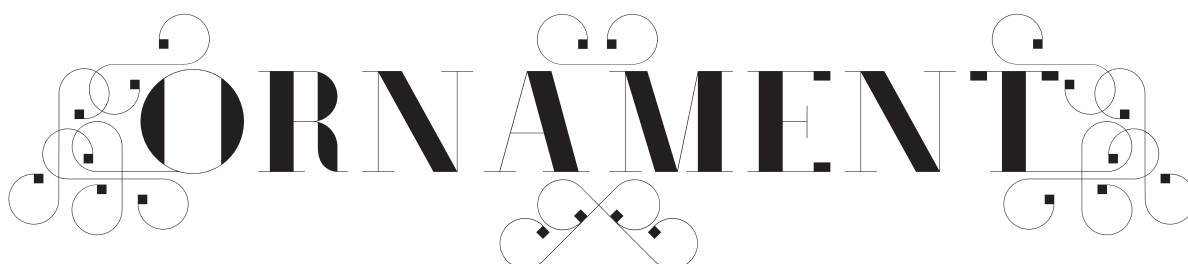


These are all the ornaments you can find in the Glyph Palette. They are designed to sit above and below the text, apart from ornaments 1 and 2, which are centred.



---

Ornaments can be used with manually added swashes.



---

## Final Tips

---

GHS hairlines have been designed to be the same width as a 0.25pt line at 72pt.

It is up to you to make sure your printing process can reproduce your artwork at the sizes you choose.

Here are some examples:

---

0.25pt line

---

---

# 72pt

---

---

9pt

Two driven jocks help fax  
my big quiz

---

11pt

Two driven jocks help fax  
my big quiz

---

12pt

Two driven jocks help fax  
my big quiz

---

14pt

Two driven jocks help  
fax my big quiz

---

17pt

Two driven jocks  
help fax  
my big quiz

---

24pt

Two driven  
jocks help fax

---

36pt

Two driven jocks help fax

---

48pt

Two driven jocks help

---

72pt

Two driven